

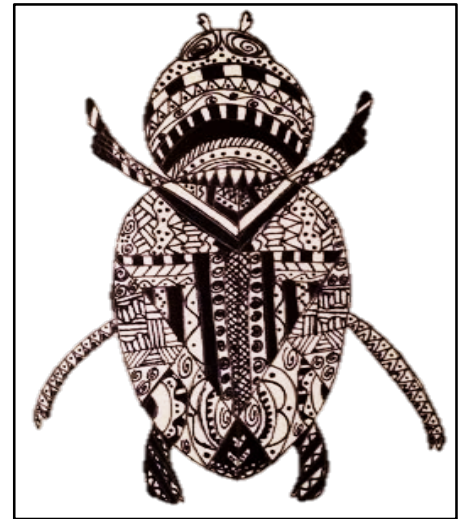
**SCIENCE AND ART LESSON PLAN**

**ART STYLE: ABSTRACTION**

Directions:

**OBJECTIVE/Directions:** Design a Symmetrical Pattern in an Insect

- View the video on *Designing*
- Select insect to draw.
- Draw with pencil, the shapes, making sure the design is a symmetrical balance; then use X-fine Sharpie trace over pencil
- Draw with Sharpie, line patterns, repeat same line three or five times, then change direction Lines: straight, curved, zigzag, spiral, diagonal, an original line is a combination of other lines.
- A symmetrical design requires that the same pattern design on one side corresponds to the other, see example.
- Balance the positives and negative shapes with white and black respectively  
View design from a distance, neither the black nor the white shapes are dominant, viewing it should feel balanced.
- Fill in all sections of the shape, the more patterns, the more interesting the design. The insect, using patterns, has been abstracted even though we can recognize the insect by its shape.
- When the design is completed:
  - **LOOK ON THE INTERNET and find one Science standard to support this lesson.**
- **Insert Standard: EXAMPLE**



**Science S2L1. Students will investigate the life cycles of different living organisms.**

<p><b><u>HIGHLIGHT WHAT IS USED IN ART</u></b></p> <p><b><u>ELEMENTS OF ART</u></b>  <b>LINE</b>  <b>SHAPE</b>              Geometric              Free Form/Organic  <b>FORM</b>  <b>COLOR</b>              Primary/Secondary              Warm/Cool-Opposite  <b>TEXTURE</b>  <b>SPACE 2-D, 3-D , + &amp; -</b></p>	<p><b><u>PRINCIPLES OF ART</u></b></p> <p><b>PATTERN</b>  <b>ENPHASIS</b>  <b>VARIETY</b>  <b>UNITY</b>  <b>BALANCE</b>              Symmetrical              Asymmetrical              Radial  <b>RHYTHM &amp; MOVEMENT</b>  <b>PROPORTION</b></p>	<p><b><u>Materials:</u></b>                  White drawing paper                  Pencil, eraser                  X-fine Sharpie                  Examples of insect shapes</p>
---	---	---